

PLATTE COUNTY

Weed and Pest Control District



Annual Report
2025

Tradescantia (Spiderwort)



A native flower that can be used for radiation detection because its blue stamen hairs turn pink when exposed to low levels of nuclear radiation.

Pictures courtesy of Trisha McCarty

Platte County
Weed and Pest Control District
Board of Directors

Ron Lockhart	Area 1	Glendo-Meadowdale Area
John Watson, Chairman	Area 2	Guernsey-Dwyer Area
Bill Criss, Secretary/Treasurer	Area 3	North Wheatland Area
Caitlin Harris	Area 4	South Wheatland Area
Josh Graves	Area 5	Slater Area
Eric Heatherly	Area 6	Chugwater Area
Amy Miller/Vice-chairman	Area 7	Town of Wheatland Area

Table of Contents

1.	Platte County Weed & Pest Programs	p. 5-8
a.	Agencies	
1.	Bureau of Land Management	
2.	Bureau of Reclamation	
3.	United States Forest Service	
4.	Wyoming National Guard	
b.	Prohibited Weed Program & Early Detection Rapid Response	
c.	Weed and Pest Control - Custom Application	
d.	Services	
e.	Cost share	
2.	Leafy Spurge and Noxious Weed Control Program	p. 9
a.	County	
b.	State	
3.	Road Rights-of-Way Noxious Weed Control Program	p. 10
a.	County	
b.	State	
4.	Black-tailed Prairie Dog Control Program	p. 11
5.	Grasshopper Program	p. 11
6.	Education	p. 12-13
7.	Cooperator of the Year	p. 14
a.	Past Years Recipients	
b.	2025 Recipient	
8.	Fun Times	p. 15-16

AGENCIES



In 2025, the Platte County Weed and Pest applied for a grant from the Bureau of Land Management. The grant was accepted. It is a 5-year grant in the total amount of \$250,000. This year we used 3 gallons of Plateau out of the chemicals given to us from the BLM and \$15,074.50 of the new grant. See Map #1.



Due to landowner leases and agency agreements the Bureau Of Reclamation currently has with other agencies they will be hiring a contractor to cover the areas previously covered by Platte County Weed and Pest.



In the Harris Park/Cottonwood and Esterbrook areas, 15.64 acres of noxious weeds were treated. The crew used a UTV and ATV sprayers. The total amount charged to the USFS was \$3,000.00. See attached map #2. Lindsay Wheat with Albany County Weed and Pest asked the Platte County Weed and Pest to treat areas in Albany County Forest service areas. The total acres treated on USFS land for Albany County was 11.12 acres for a total amount of \$3,000.



In 2025 the Platte County Weed and Pest sprayed 52.5 acres of noxious weeds for the Wyoming National Guard. The agreement was for \$15,000.00. Due to base access issues, only \$6,747.40 dollars were used. See map #3.

EARLY DETECTION RAPID RESPONSE (EDRR)

The Early Detection Rapid Response Weed Program, initiated in 2002, was designed to be a proactive, aggressive response to noxious weeds not commonly found in Platte County. The Platte County Weed and Pest will provide an educational program and attempt eradication and will absorb 100% of the costs. Species include Black henbane, Dyers woad, Ox-eye daisy, Purple loosestrife, Medusahead, Ventenata, species on the state of Wyoming EDRR list, and any other species, that may appear, at the Supervisor's and/or Board of Director's discretion. In 2025, there was no EDRR spraying needed.



Black Henbane



Dyers woad



Ox-eye daisy



Purple loosestrife



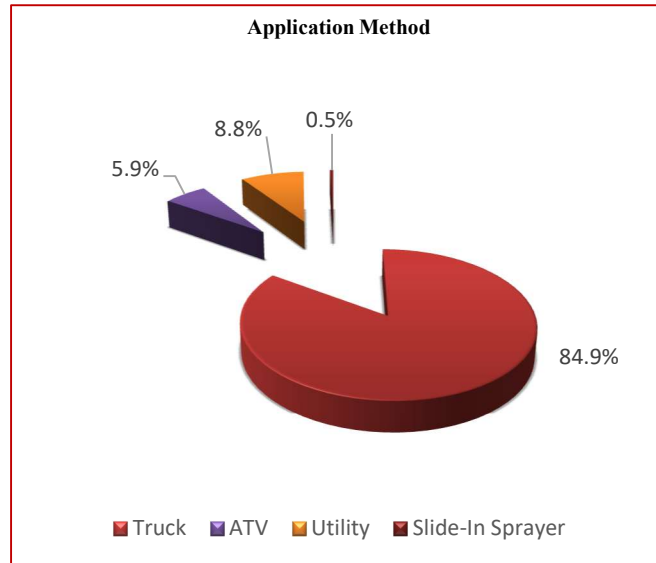
Medusahead



Ventenata

CUSTOM APPLICATION

The Platte County Weed and Pest did custom applications for 149 producers including the Wheatland Irrigation District. A total of 1,650.34 acres of weeds were treated during the 2025 spray season under Custom Application. This does not include any County, State, or Federal agency contracts. The custom truck treated 1,400.7 acres at a cost of \$30,811.68, ATVs treated 97.2 acres at a cost of \$7,639.61, the utility vehicle sprayer treated 144.94 acres at a cost of \$6,116.08 and Slide-in Sprayers treated 7.5 acres at a cost of \$403.62. A total cost of \$44,970.99 was invoiced for these treatments. Included in map #4. These figures do not include Black-tailed prairie dog or Leafy spurge treatments (see Leafy spurge section on page 9 and prairie dog section on page 11).



CHEATGRASS PROGRAM

In 2023 The Platte County Weed and Pest began a program to work on the large amount of Cheatgrass in Platte County. In 2025, utilizing multiple grants from varying agencies, we were able to treat 49,903.01 acres of Cheatgrass using Rejuvra at 50z/acre and Panoramic at 30z/acre. The following chart shows the acre and funding amounts for this year's projects. See map #5.

Grant Name	Acres applied	Amount Received from Grant	Amount Received from other sources
Weed and Pest SAC Grant	4,274.1	\$158,732.56	\$85,760.00
Weed and Pest Full Price	1,331	\$0.00	\$41,029.83
BLM – WWNRT Side	2,266.94	\$144,906.66	\$0.00
BLM – WP Side	268	\$15,619.04	\$0.00
WWNRT Grant	41,842.97	\$2,556,205.41	\$0.00

SALES

Platte County Weed and Pest offers many services to the residents of Platte County. Insecticides, herbicides, rodenticides, and biological control methods are available not only for agricultural producers, but also for small acreage landowners and town residents. Pesticide application equipment (backpacks and drop spreaders) is available for use at no cost. The PCWP rents to landowners a 200-gallon slide-in insecticide sprayer as well as a 200-gallon herbicide sprayer. Other services include recommendations for weed and pest control; weed free hay certification; and use of the water filling station. During 2025, the PCWP office staff invoiced 430 individual producer sales plus 304 individual cash sales for a total amount of \$199,017.14.

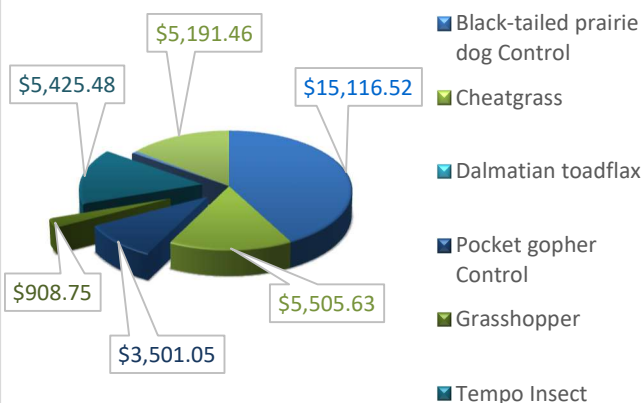
HAY CERTIFICATION

In 2025, Patrick Bookout certified 6 fields at a total of 398 acres for 4 different landowners. The types of hay certified were alfalfa, grass, and alfalfa-grass mix. Due to the drought in Platte County, there were less cuttings and therefore fewer certifications needed.

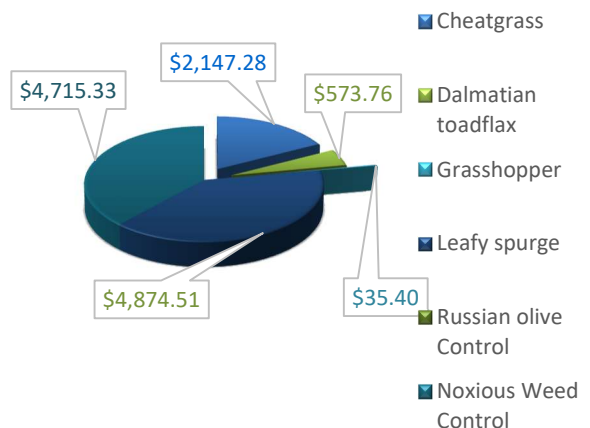
COST-SHARE

The Platte County Weed and Pest Board approved various cost-shares on purchased chemicals. Black-tailed prairie dog Rodenticides: 80%; Pocket gophers rodenticides, Grasshopper insecticides, Cheatgrass, and Russian olive chemicals: 50%; Tempo insecticide for other insects: 25%; Specific noxious weed chemicals: 25%. The fiscal year caps are: Black-tailed prairie dog rodenticides: \$2,500 per landowner; Leafy spurge chemicals: \$2,500 per landowner and a combination of all other cost-shares: \$1,200 per landowner. The first chart below shows the contributions PCWP made for the cost-share programs in sales. These figures are from July 1, 2024-June 30, 2025. The 2nd chart below shows the contributions PCWP made for cost-share chemicals used in weed and pest application. These figures are from the 2025 season.

Chemical Cost-Share Amount



Application Cost-Share Amount



LEAFY SPURGE

County Treatments



Leafy spurge control falls under the Platte County Weed and Pest's second mill levy. PCWP provides herbicides and application for the control of Leafy spurge at a cost-share of 100% (up to \$2,500) per landowner. This is an important service that the PCWP provides to county residents. During FYE 2025, 342.88 acres of Leafy spurge were treated utilizing ATVs. Costs associated with the application program include chemicals \$4,226.47, equipment & labor \$15,138.21, and mileage \$1,426.79 for a total of \$20,791.47 or \$60.64 per acre.



This year Platte County Weed and Pest worked with Albany County Weed and Pest in spraying 300 acres and surveying 12,948.7 acres of Leafy spurge by helicopter in the southern Van Ortwick area. The sprayed acres included 290.1 acres of private lands, 9.9 acres on State lands and zero acres on BLM lands. Chemicals used for this project were: Tordon 22K at 32oz/acre; 2, 4-D Amine at 16oz/acre; surfactant and dye. This has been an ongoing project to try to control Leafy spurge in this hard-to-get to area. Various grants and Weed and Pest contributions helped pay the total cost of \$35,498.91. Albany County Weed and Pest also did treatments by ATV and foot. PCWP budgeted \$15,000 for this year's acres of which \$10,000 was utilized. Trisha McCarty and Ainsley Adams also distributed some Leafy spurge flea beetles on the Sanchez Farm. See map #6

Eight landowners came in and picked up products for Leafy spurge control in FY2025. The following table summarizes chemicals picked up by the landowners.

Product	Amount Purchased	Costs
Brewer 90/10	25 gallons	\$ 268.80
Tordon 22K	65 gallons	\$2,124.80
Venue	3 quarts	\$ 500.16
Freelex	10 gallons	\$ 358.40
Platoon	20 gallons	\$ 256.00
Total		\$ 3,508.16

State Treatments

The State land noxious weed and pest control is now paid for by the Wyoming Department of Agriculture. The Platte County Weed and Pest was awarded a total of \$13,526.50 for treatment of weeds and pests on State lands. The amount of funds that will be invoiced to the Wyoming Department of Agriculture for Leafy spurge is \$2,870.89.

ROAD RIGHTS-OF-WAY

County Roads

The Platte County Weed and Pest began treating county roads on April 22nd, 2025. To avoid crops and other vegetative damage on farm ground and residential areas, PCWP sprays only when weather conditions are favorable. Organic farmers are encouraged to let PCWP know of their location to avoid negative effects to their operation. Designated and declared noxious weeds are prominent along road rights-of-way. The numbers below are the amounts spent from July 1, of 2024 to June 30, 2025. See map #8.

Item	Total Amount
Chemical Costs	\$14,480.73
Equipment Costs	\$ 5,760.00
Total Costs	\$20,240.72
642.97 Acres	\$31.48/Acre

State Highways

The Platte County Weed and Pest receives funding from the Wyoming Department of Agriculture for treatment of noxious weeds and pests along State Road rights-of-way. One of the primary vectors by which noxious weeds spread is vehicle dissemination along roads. Weeds and pests were treated from the road edge to the boundary fence. This year, the PCWP treated noxious weeds using a Custom Truck sprayer for a total cost of \$16,885.95. The 2025 allocation was \$17,255.00. See map #8

State Road	Description	Chemical cost	Application cost	Total Cost	Acres Treated
PL 01A	I-25		\$ 1,375.00	\$ 1,375.00	55
PL 01B	I-25 & US 87	\$ 1,912.69	\$ 4,505.00	\$ 6,417.69	106.69
PL 01M	I-25 SV Rd	\$ 109.08	\$ 112.50	\$ 221.58	6.33
PL 02A	WY 321	\$ 333.27	\$ 1,012.50	\$ 1,345.77	19.34
PL 03A	WY 34	\$ 476.81	\$ 1,125.00	\$ 1,601.81	27.67
PL 04A	WY 26	\$ 247.11	\$ 1,197.50	\$ 1,444.61	25.34
PL 08A	WY 321	\$ 114.94	\$ 495.00	\$ 609.94	6.67
PL 10A	I-25 SR	\$ 206.78	\$ 472.50	\$ 679.28	12
PL 11A	WY 317	\$ 11.55	\$ 90.00	\$ 101.55	0.67
PL 17A	WY 320	\$ 878.84	\$ 1,372.50	\$ 2,251.34	51
PL 18A	WY 320	\$ 160.95	\$ 472.50	\$ 633.45	9.34
PL 22A	I-25 AV. Rd.	\$ 68.93	\$ 135.00	\$ 203.93	4
	TOTALS	\$ 4,520.95	\$ 12,365.00	\$ 16,885.95	324.05



BLACK-TAILED PRAIRIE DOG CONTROL



State Treatments

Approximately 4,338 acres of Black-tailed prairie dog infestations were treated on State Lands, as of December 31, 2025, for a cost of \$78,716.04. \$10,655.61 will be billed to the Department of Agriculture for zone 1 application. The lessees will pay the remaining amount divided by total acres treated at end of program.

County Treatments

To assist landowners with Black-tailed prairie dog infestations, the Platte County Weed and Pest implemented the first Black-tailed prairie dog Control Program in 2003. It has become one of the most popular control programs of PCWP. The three main goals of the program are: 1) continue to control and reduce current Black-tailed prairie dog population; 2) prevent the spread of Black-tailed prairie dog populations to protect lands not currently infested; and 3) encourage neighboring landowners to treat entire blocks of Black-tailed prairie dog populations. This year with the inclusion of a contractor, as of December 31, 2025, approximately 9,129 acres of Black-tailed prairie dog infestations were treated on deeded ground. Landowners were charged a cost-share price of \$5.47 per treated acre. A \$90,000 Pesticide Registration Fee Grant was received from the Wyoming Department of Agriculture (approved by the State Allocation Committee) to assist with the costs associated with the program. See attached map #9.

Overview

As of December 31st, the expenses associated with the Black-tailed prairie dog Program are \$294,185.65. The income from the grant, State, and landowners thus far is \$126,538.80. Which would put the Platte County Weed and Pest share of the program at \$167,646.85. The average cost per acre for this year's prairie dog treatment as of December 31st is \$21.84.

GRASSHOPPER TREATMENTS

In 2025 the Platte County Weed and Pest expected to conduct a grasshopper program. Thankfully there were no grasshoppers to treat this year.



EDUCATION

The Total Spring Show

Another success for the Total Spring Show. The chilly weather didn't stop the community from visiting the Agriplex to see what was new for 2025. Platte County Weed and Pest joined the fun. There were several questions about cheatgrass, thistles, and of course everyone's favorite... Grasshoppers. It is hard to predict what the summer has in store for us. We are prepared and looking forward to the upcoming season. A new addition for this year is a coloring book from the EPA.

"Bertie the Busy Bee" is a story about a bee whose friend is sick, and she is trying to figure out why. She discovers that someone has sprayed insecticide to kill bugs and did not check for the Bee Box on the label of the chemical they were using. Please help our local pollinators and look for the Bee Box when you are using chemicals.



West Science Day



West Elementary students were very excited for May 1st this year, it was West Science Day! Several agencies from Platte County presented the students with activities to demonstrate their profession. Platte County Weed and Pest's presentation was on Ecosystems. We discussed how important it is to help keep the invasive plants and pests from taking over. The students drew and colored in a basic ecosystem, sun, land, water and one living organism. Mrs. Bookout drew a flower with a ladybug. Then we passed our papers to the left, and each student drew their living organism on each paper that came around. Lots of artistry, discussion, and fun for an afternoon.

Discovery Day

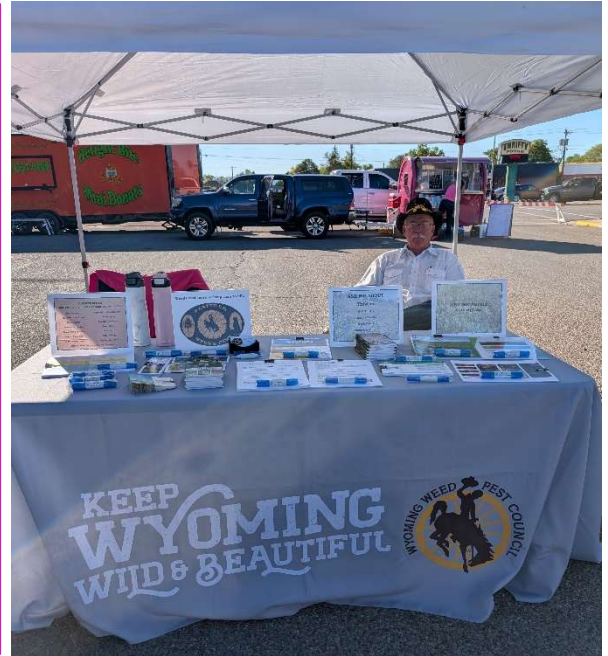
Platte County Weed and Pest displayed the Roads Truck, which sprays the County and State rights-of-way, and the supervisors 4-wheeler with a spray tank for Discovery Day this year. It was a nice sunny day for the community to come see some of the equipment that businesses use in our area. Kids and adults enjoyed learning about the equipment. With warmer weather coming, questions about weeds and grasshoppers dominated the conversations.



EDUCATION CONTINUED

Octoberfest

A wonderful night of music, food, and drink. Pat and Missy were on hand to answer questions on a variety of subjects from cheatgrass, thistles, grasshoppers, prairie dogs, to alfalfa weevils. We also had a Western Conifer Seed Bug show up to make sure the table was set up properly. We apparently did a good job, it flew in, looked around for a minute or two, then was off to more important things. Several newcomers to Platte County stopped by, curious about the vegetation in the area. "Should I leave it alone or should I get rid of it?" The Wyoming Noxious Weed Handbook was a priceless tool to hand out for identification. Several established residents stopped by as well, discussing how well the spray jobs did, how many grasshoppers they had before and after spraying in 2024, and to see how prairie dog season is going. A well-rounded evening for sure.



Career Day

Platte County Weed and Pest joined in on Career Day at the Wheatland High School November 12. Several students stopped by for job descriptions.



COOPERATOR OF THE YEAR

Past Years' Recipients

The Platte County Weed and Pest Board created the Platte County Weed and Pest Cooperator of the Year award in 1994. The award is given annually to a Platte County farmer/rancher who has demonstrated good stewardship and land management practices and who actively and aggressively works to control noxious weeds and pests. The table below shows past Cooperator of the Year award recipients.

Year	Recipient	Area	Year	Recipient	Area
1994	John Braunschweig	6	1995	John Lancaster	1
1996	John Wilhelm	7	1997	Mike Johnston	4,5
1998	John L. Baker	5	1999	Don Olson	4
2000	Dennis Baker	5	2001	Randy Hunter	4
2002	George Bauer Jr	3	2003	Larry Lebsack	3
2004	John F Baker	5	2005	Pat & Sherri Cullen	7
2006	Newton Russell	5	2007	Rob Hellbaum	5
2008	Rocky Foy	1	2009	Ken & Patti Small	4
2010	Sumner & Shirley Shockley	3	2011	Irvine Ranch	4
2012	Jim & Mary Mathis - Gittaway Ranch	4	2013	Tyler Dodge	4
2014	Dan Kennedy	5	2015	Rodger & Lindy Schroeder	6
2016	Dave Foreman - 14 Ranch	1	2017	Preuit Ranch	4,3
2018	John & Kathy Watson	1,2,5	2019	Dan Artery	5
2020	Melvin and Mimi Kontour	2,3	2021	Bard Ranch	4
2022	West Ranch	6	2023	Slim Ranch	1
2024	Stellpflug Land and Cattle Company	5			

2025 Recipient



Scissors Ranch and Joe Johnson Company, Richard Johnson, received the Platte County Weed and Pest Cooperator of the Year award for 2025. Richard Johnson was chosen for his endeavors to control Leafy spurge, thistle, and other noxious weeds and prairie dogs via ground control, and for his loyalty in buying chemicals from Platte County Weed and Pest. Left: Richard and Bonnie Johnson accepted the award from Chairman John Watson and Supervisor Patrick Bookout.

FUN TIMES

Office Manager Workshop



Sarah Taylor and Gleny Laffitte attended the Office Manager Workshop in Pinedale, Wyoming. They learned a lot and had a good time.



Private Applicator Class

The Platte County Weed and Pest in conjunction with the University of Wyoming Extension Service hosts a Private Applicator Class each year. This class is designed to help farmers and ranchers whose license will expire April 30th of the current year or for anyone wishing to obtain a new Private Pesticide Applicator's license. In 2025, Platte County Weed and Pest hosted one class with 30 attendees on February 13th.

Spring Workshop

Pat Bookout, Trisha McCarty attended the Spring Workshop in Saratoga, Wyoming

Fall Conference



The Wyoming Weed and Pest Council held their Fall Conference in Jackson Wyoming. Two staff members and two board members from Platte County attended the conference. Amy Miller received her 5-year service certificate. Congratulations Amy! Thanks for your hard work.



Employee Christmas Party



The Platte County Weed and Pest Employees enjoyed an afternoon of treats, gifts, and visiting at the annual Christmas party.

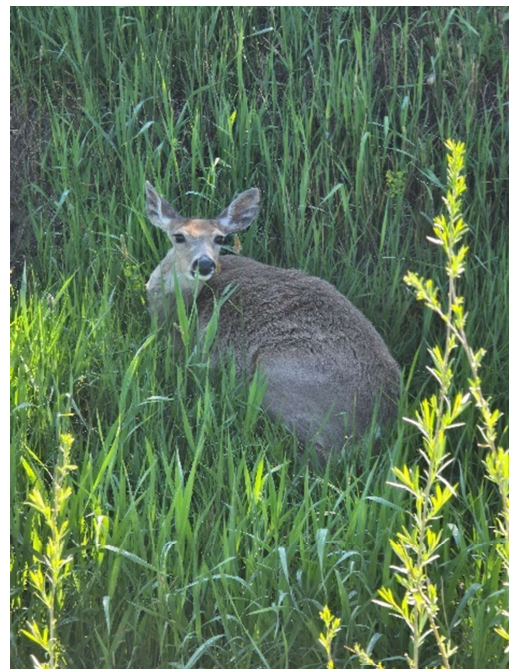
Jug Recycling

The Wyoming Weed and Pest Council offers two ways for the Weed and Pest districts and landowners to dispose of their used chemical containers. They can use the WWPC bailer, or the garbage compactor trucks from Iowa. In 2025, one garbage compactor truck made it through the state. The Platte County Weed and Pest utilized the garbage compactor truck method. Trisha and the seasonal crew members, along with crews from Carbon and Albany counties, loaded the jugs into the truck. Thirteen of the twenty-three districts participated in the collection. Six stops were made by the truck, all but Johnson County's jugs were able to be collected. The other ten districts either used the baler or have their own method of jug disposal.



The End!

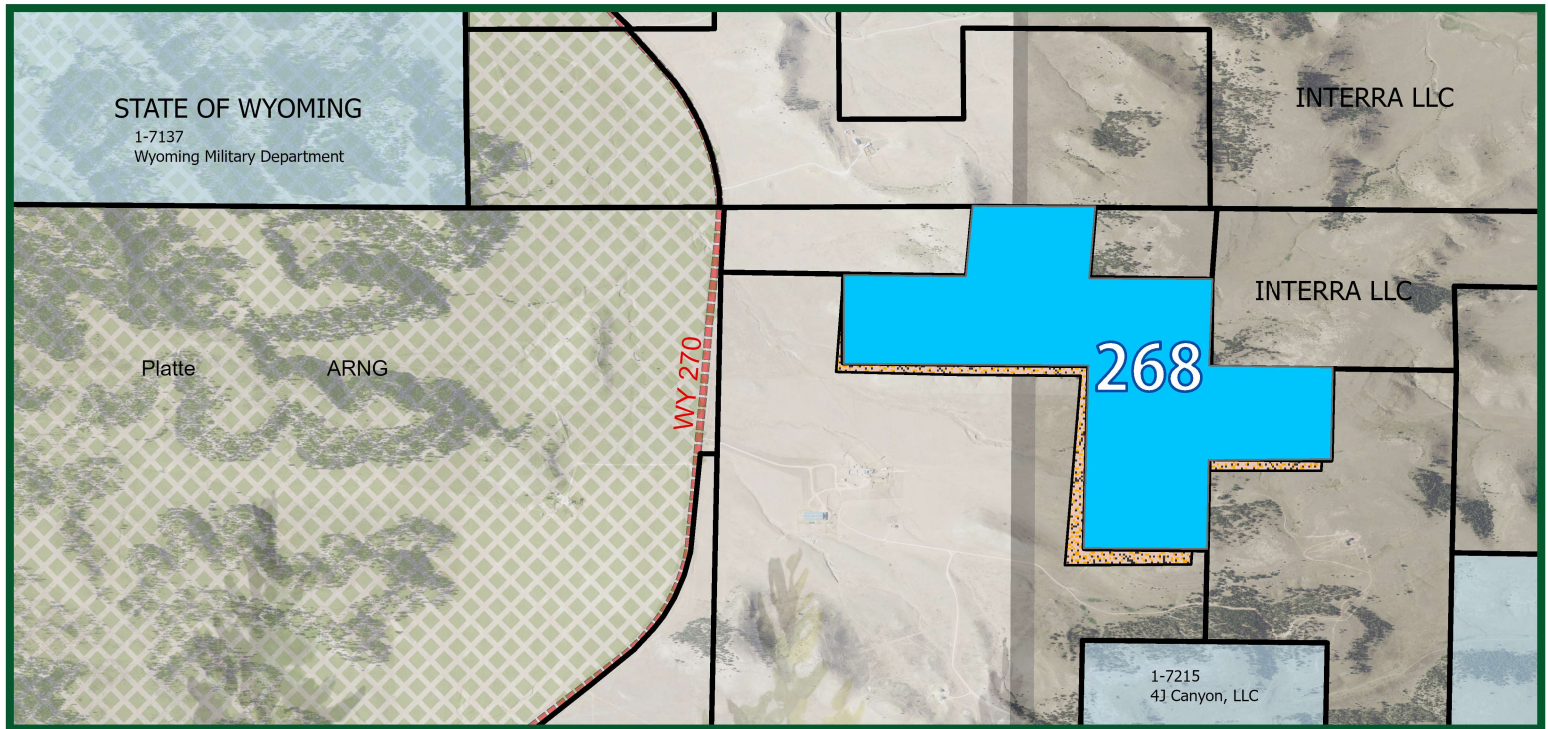




Written and produced by Patrick Bookout, Trisha McCarty, Sarah Taylor, and Glendowyn Laffitte 2025

**2025 Platte County
Bureau of Land Management
Noxious Weeds**

Map #1

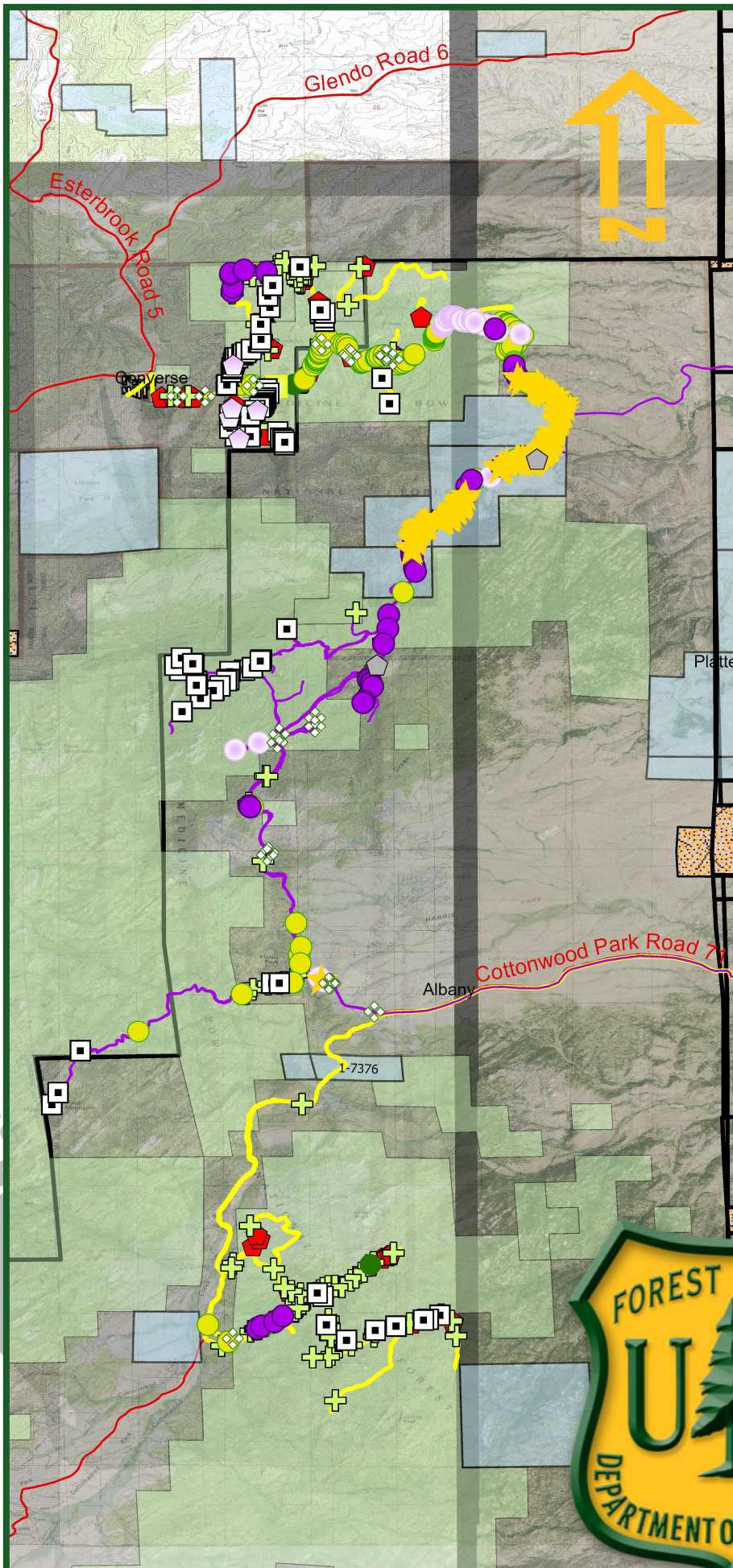


- 2023StateLand
- BLM
- Camp Guernsey
- 2025BLM_Funded

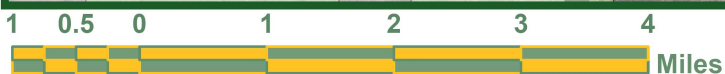


Map #2

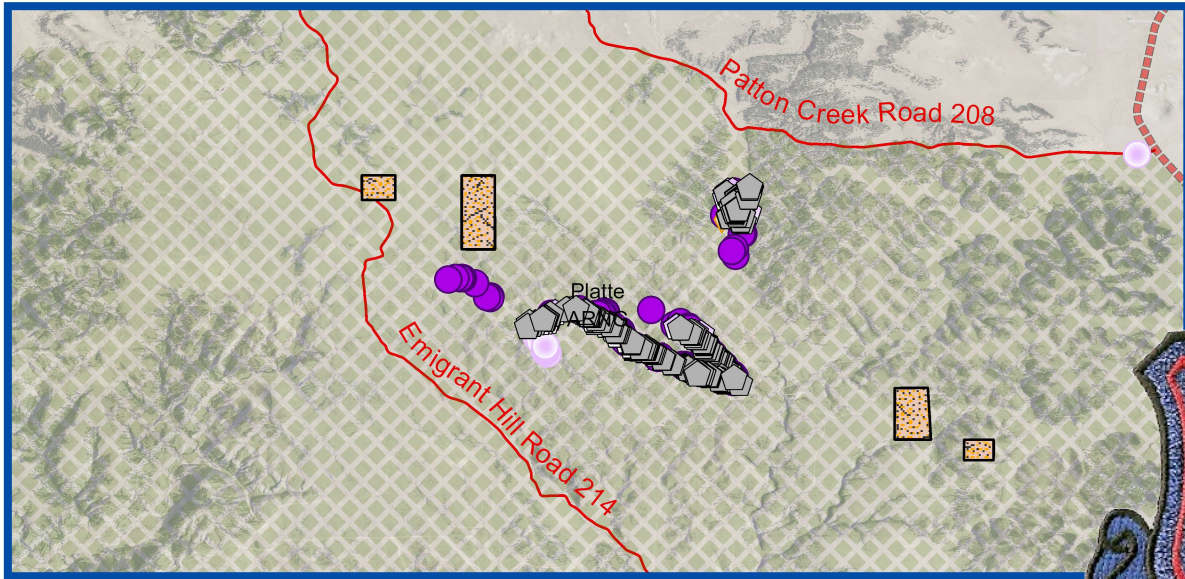
2025 Platte County United States Forest Service Noxious Weeds



CountyRoads	Weed
2023StateLand	Canada thistle
ForestService	Common burdock
BLM	Common mullein
LandOwner	Curly dock
USFS	Curlycup gumweed
USFS - Albany	Dalmatian toadflax
	Field bindweed
	Houndstongue
	Leafy spurge
	Musk thistle
	Perennial pepperweed
	Plumeless thistle
	Puncture vine
	Scotch thistle
	Whitetop



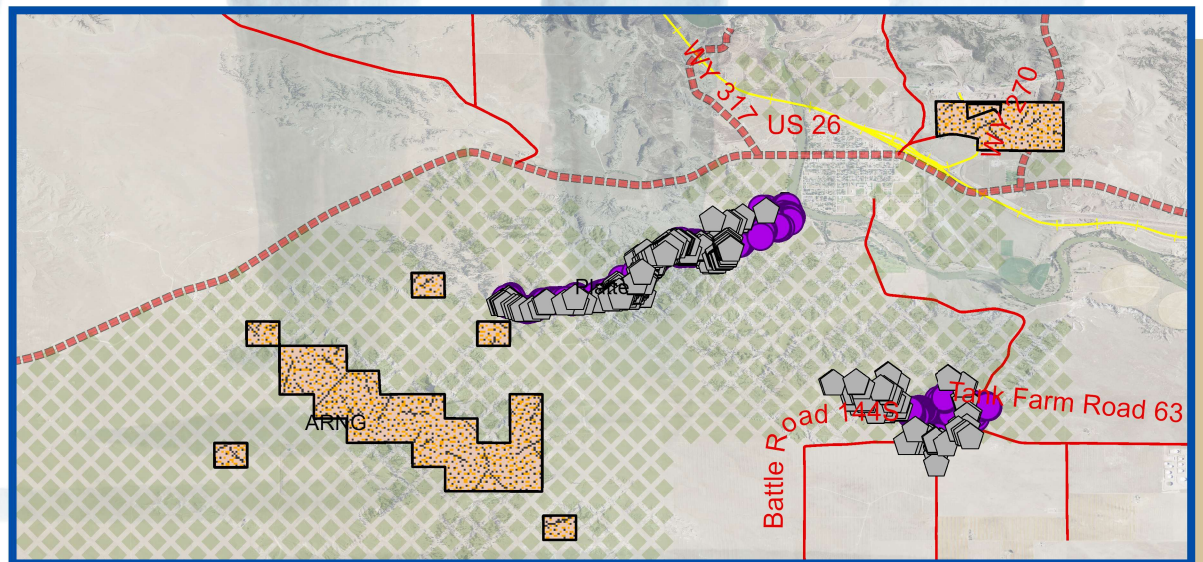
Map #3



0 0.5 1 2 Miles

Camp Guernsey	Canada thistle	Poison hemlock
Highways	Common mullein	Scotch thistle
County Roads	Field bindweed	
Weed	Musk thistle	
Buffalobur	Plumeless thistle	

2025 Camp Guernsey Wyoming National Guard Noxious Weeds

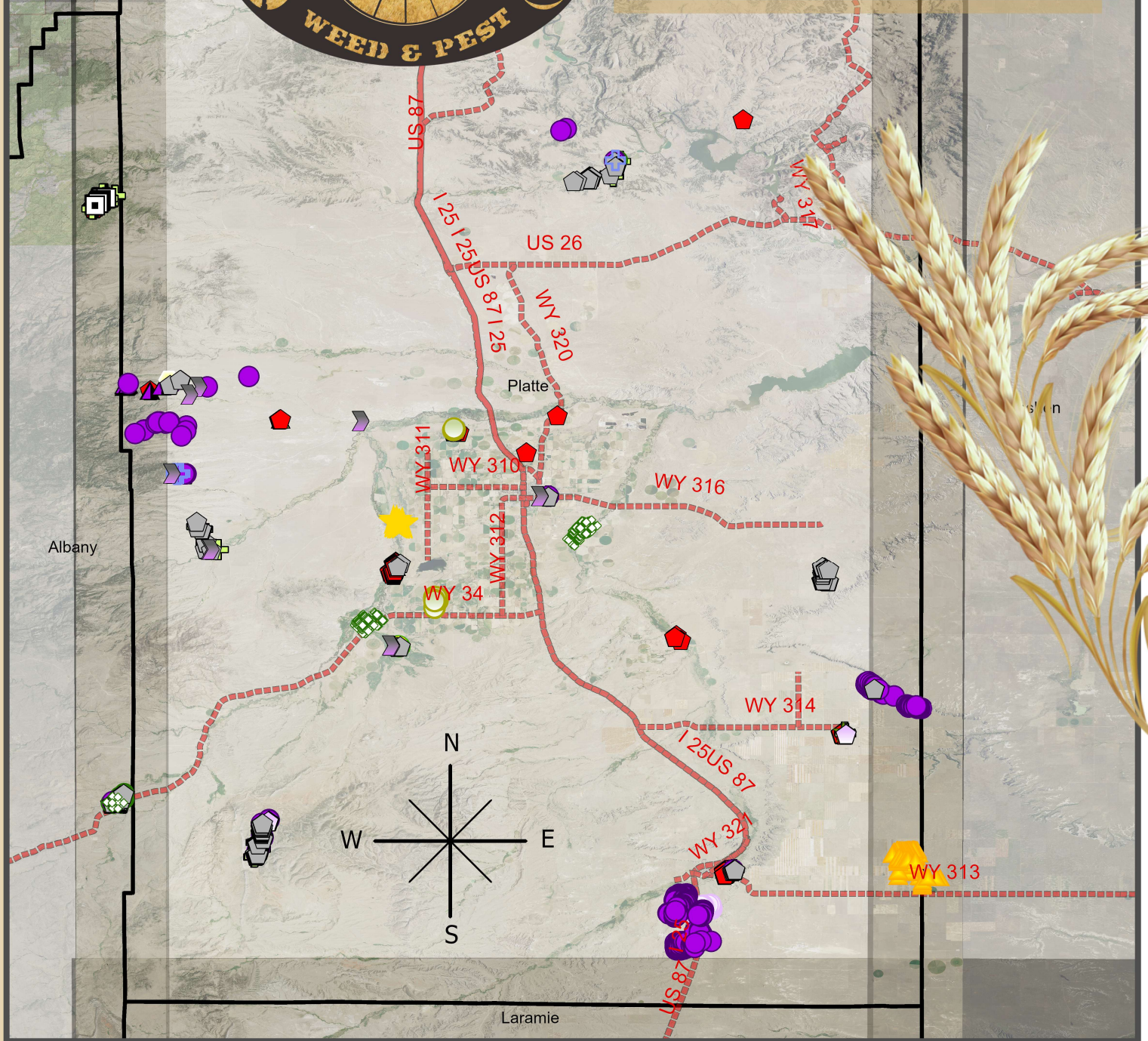


Map #4

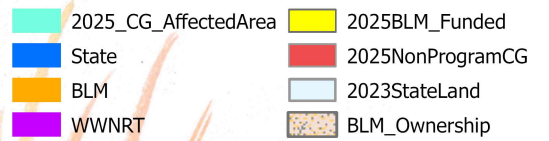
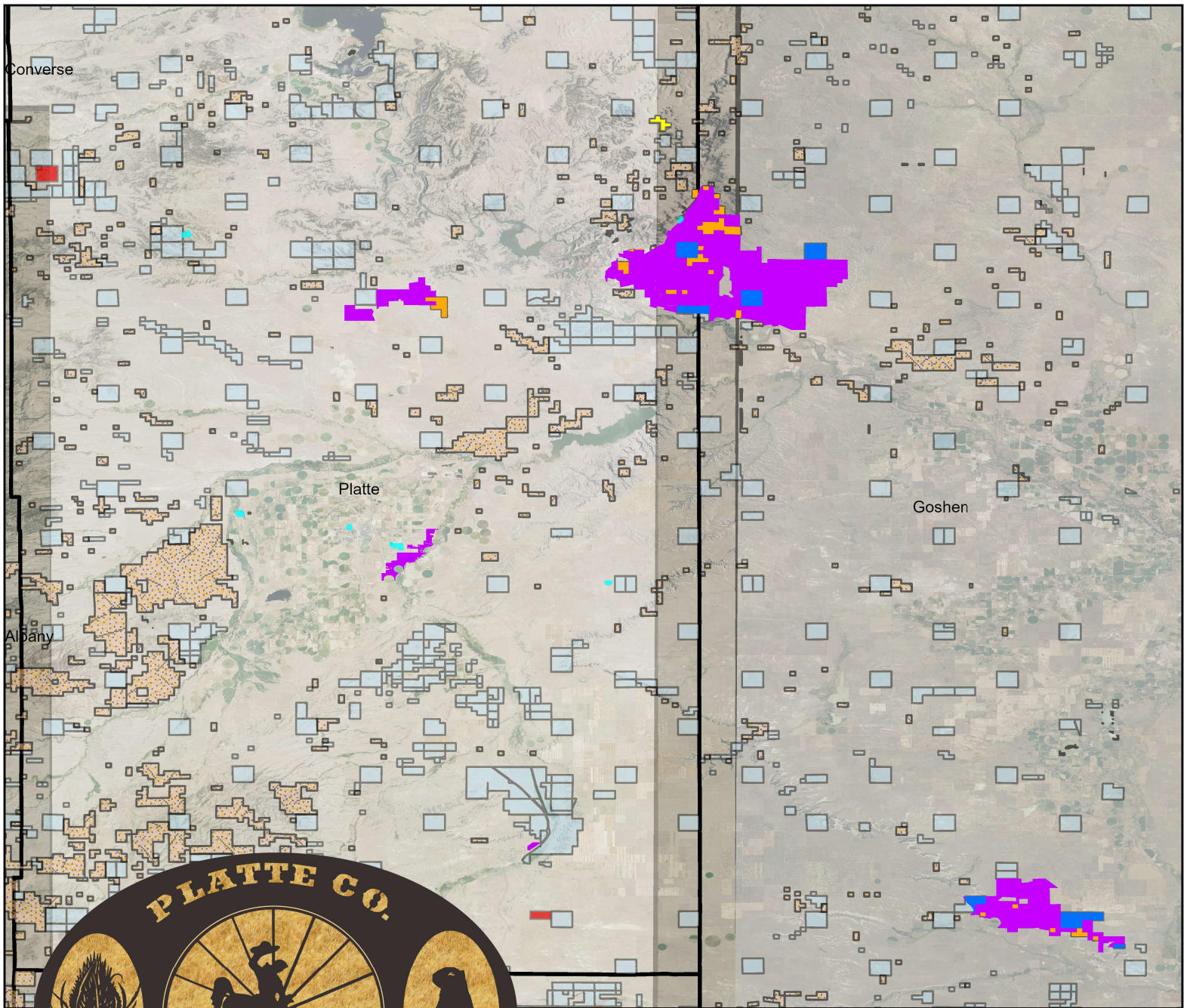
2025 Platte County Weed and Pest Custom Application Noxious Weeds



Weed	
Buffalobur	Musk thistle
Canada thistle	Oxeye daisy
Common burdock	Perennial pepperweed
Common mullein	Plumeless thistle
Curly dock	Puncture vine
Curlycup gumweed	Russian olive
Dalmation toadflax	Scotch thistle
Field bindweed	Spotted knapweed
Houndstongue	Whitetop
Kochia	Wild licorice



0 5 10 20 Miles



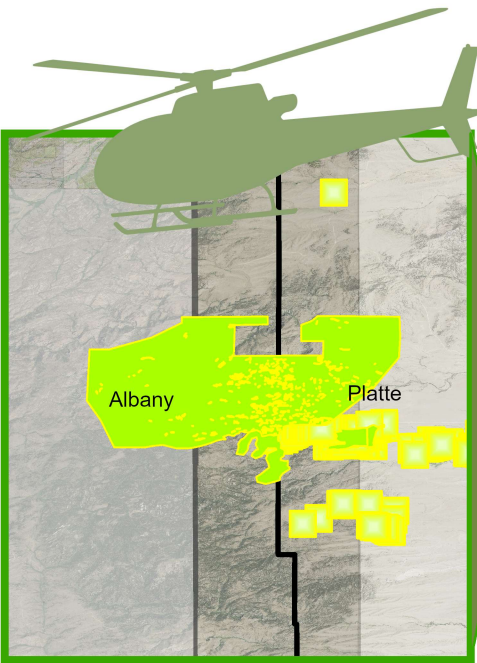
Map #5



2025 Platte County Weed and Pest Cheatgrass Control

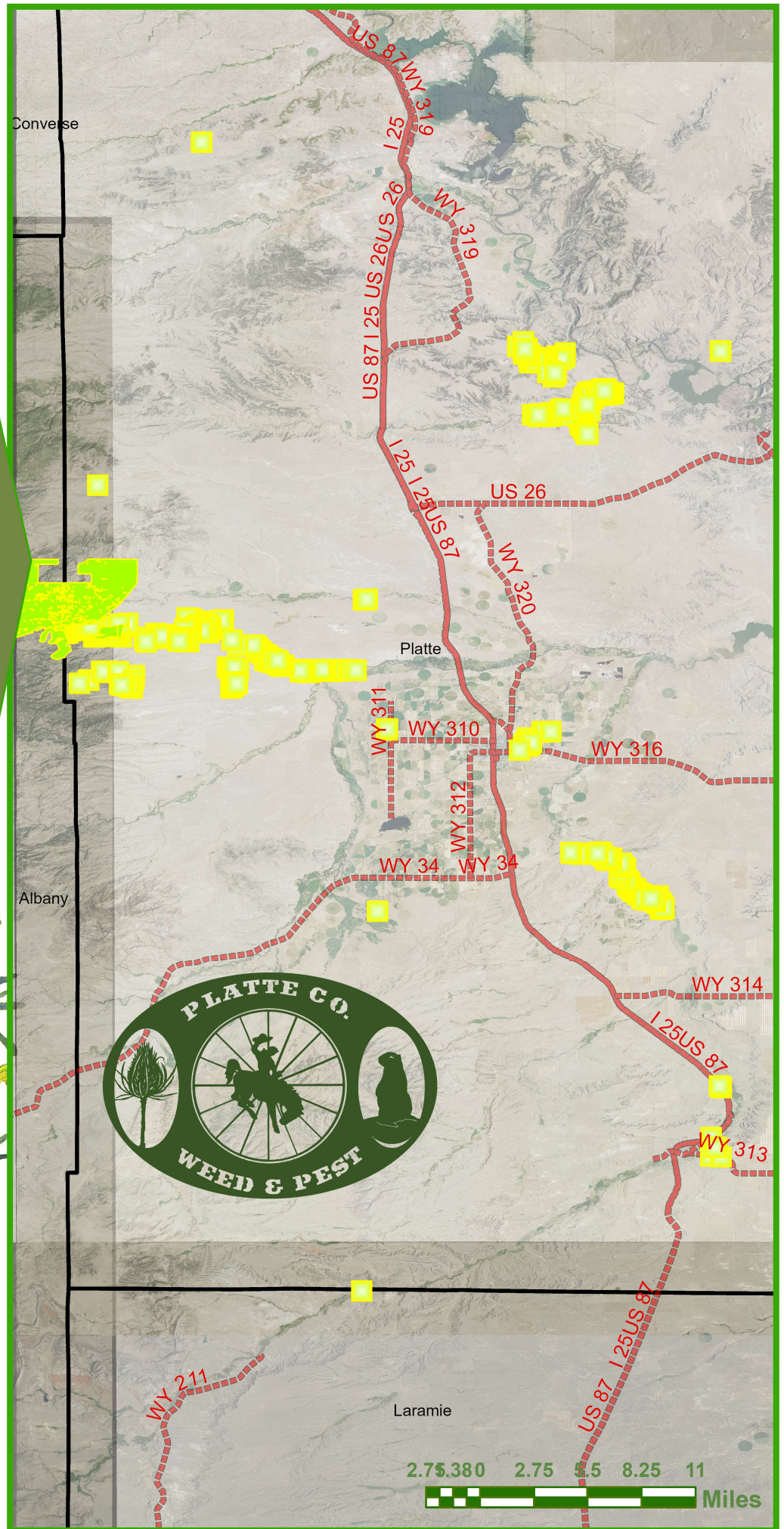


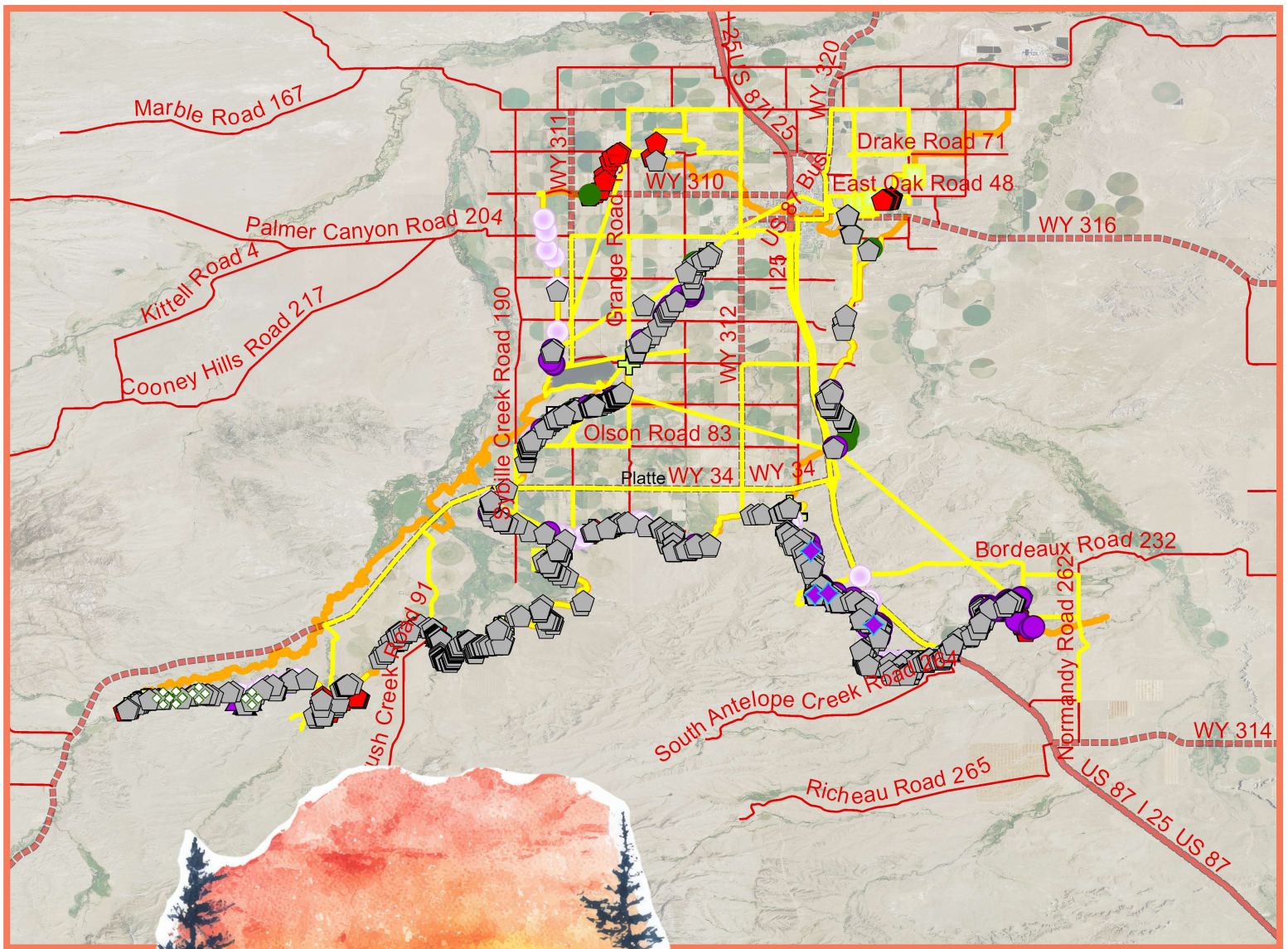
Map #6

2025 Platte County Leafy Spurge Application



-  Leafy spurge
-  2025AlbanyCounty

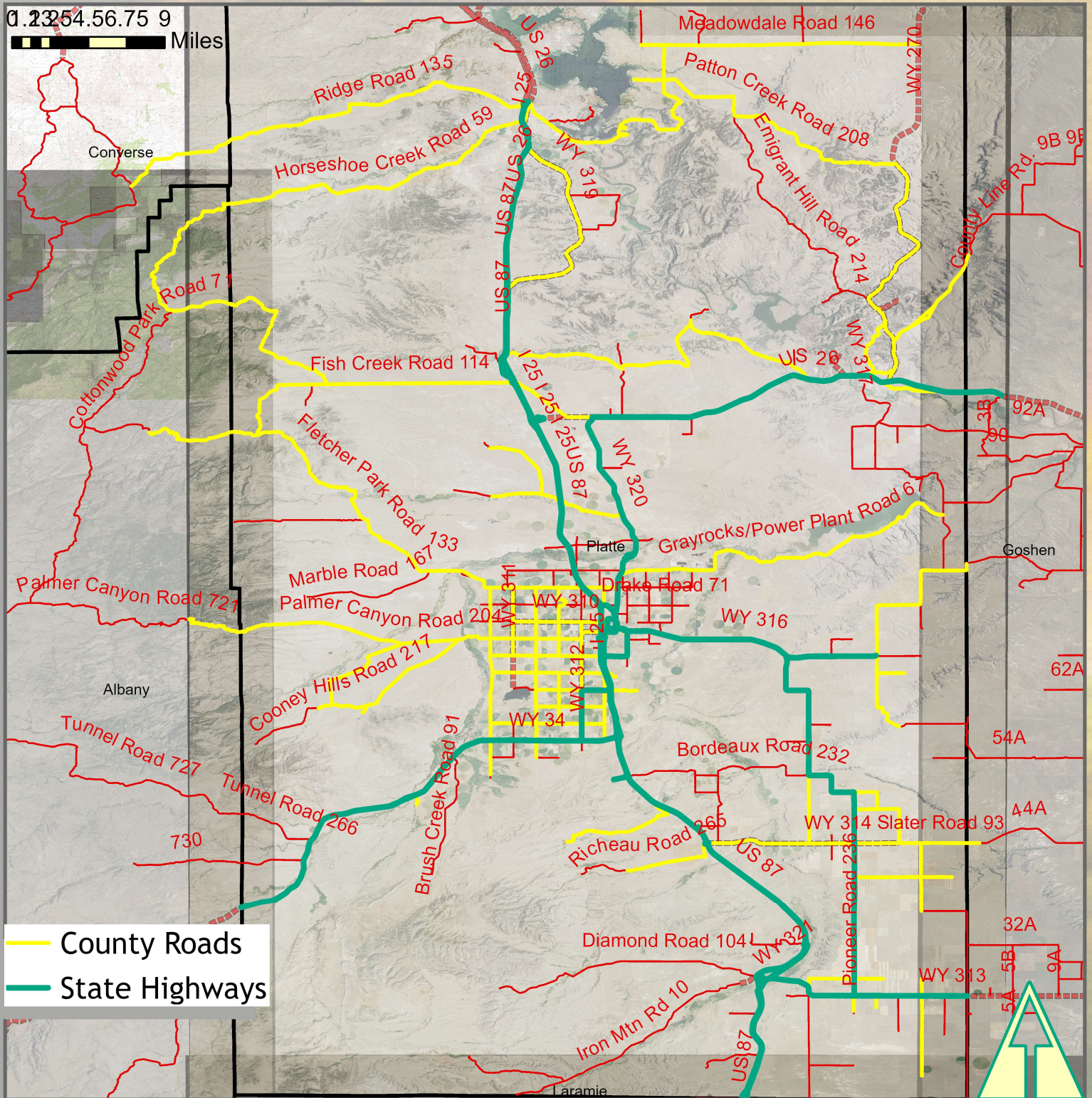




Map #7

**2025 Platte County
Wheatland Irrigation District
Noxious Weeds**





Map #9

2025

Platte County Black-tailed Prairie Dogs

 Contractor
 PCWP

